

Midnight Haunt

ANDOVER FABRICS

a
100
years



Magic Pumpkin Quilt, Pillow
and Flag Bunting
designed by: **Janet Houts**

Quilt Size: **44" x 50"**

Pillow Size: **24" x 24"**

Flag Bunting Size: **9" x 60"**

Skill Level: **Intermediate**

andoverfabrics.com

andover • makower.uk

Free Pattern Download Available

1384 Broadway New York, NY 10018
Tel. (800) 223-5678 • andoverfabrics.com

10/15/20

Magic Pumpkin Quilt, Pillow & Flag Bunting

Introducing Andover Fabrics new collection: **MIDNIGHT HAUNT** by Andover Fabrics

Quilt, Pillow and Flag Bunting designed by Janet Houts



Quilt finishes 44" x 50"

Pillow: 24" x 24"

Flag Bunting finishes 9" x 60"

Next to handing out candy at Halloween, carving pumpkins is the second most popular thing to do in late October in America.

Celebrate the season by hanging the pumpkin quilt in your home. Enjoy the fun even longer by making a matching pillow and flag bunting. Easy piecing methods and fusible appliqué make the project easy enough for beginning quilters.

Cutting Directions

Note: Read assembly directions before cutting patches. All measurements are cut sizes and include 1/4" seam allowances.

A fat 1/8 is a 9" x 20"-22" cut of fabric. Sashes are cut the exact lengths required plus 1/4" seam allowances. WOF designates the width of fabric from selvedge to selvedge (approximately 42" wide).

[Cutting for pillow is in brackets.]

Fabric A

Cut (2) borders 7 1/2" x 32 1/2", cut crosswise

Fabric B

Cut (14) squares 5" (4 7/8") for HST

(Read Step 2 before cutting)

Cut mouth, eyes, nose, and eyebrow [same for pillow]

Fabric C

Fussy-cut (12) rectangles 4 1/2" x 8 1/2", centering skeleton motif

Cut (1) Leaf Template #5 [Cut same appliqué for pillow.]

Cut (1) Leaf #5 reversed

Cut (1) Leaf #7

Fabric D

Cut (1) stem [same for pillow]

Fabric E

Cut (7) squares 5" (4 7/8") for HST

Cut (2) squares 4 1/2" for corners [same]

Fabric F

Cut (7) squares 5" (4 7/8") for HST

Cut (2) squares 4 1/2" for corners [same]

Fabric Requirements

	Yardage	Fabric	
Fabric A	border	1/2 yard	9780 K
Fabric B	face, border	1/2 yard	9781 K
Fabric C	border, leaves	1 1/2 yards	9781 KL
Fabric D	stem	fat 1/8 yard	9783 K
Fabric E	inner border	1/2 yard	9784 C
Fabric F	inner border	1/2 yard	9784 O
Fabric G	pumpkin, leaves	1/2 yard	9785 KO
*Fabric H	background	3/4 yard	9785 OL
Fabric I	sash, pumpkin	1 yard	9786 O
Binding		5/8 yard	9784 K
*Backing		3 yards	9785 OL

Note: Yardage is sufficient to make the pillow and flag bunting with these additions:

Pillow

Fabric H: 3/4 yard

Backing of your choice: 3/4 yard

24" pillow form or stuffing

Also needed for flag bunting:

2 yards 1/2"-wide double-fold black bias tape

Fabric G

Cut 48 squares 2"

Cut (1) pumpkin [Cut same appliqué for pillow]

Cut (1) Leaf #4

Cut (1) Leaf #6

Cut (1) Leaf #6 reversed

Fabric H

Cut (1) 24 1/2" square [same]

Fabric I

Cut (9) strips 1 1/2" x WOF, pieced to make the following:

(4) sashes 1 1/2" x 48 1/2"

(2) sashes 1 1/2" x 44 1/2"

(2) sashes 1 1/2" x 32 1/2"

Cut (1) pumpkin [same]

Binding

Cut (5) strips 2 1/2" x WOF for binding

Backing

Cut (2) panels 29" x 52", pieced to fit quilt top with overlap on all sides

[Cut (1) background square 24 1/2"]

Magic Pumpkin Quilt, Pillow & Flag Bunting



Making the Quilt

- To add the corners to the center Fabric H square, draw a diagonal line on the wrong side of the Fabric E and F 4½" squares. Referring to Diagram 1, place a marked square on the Fabric H square, right sides together, aligning raw edges at the corner. Stitch on the drawn line; trim away and discard excess fabric. Press open.

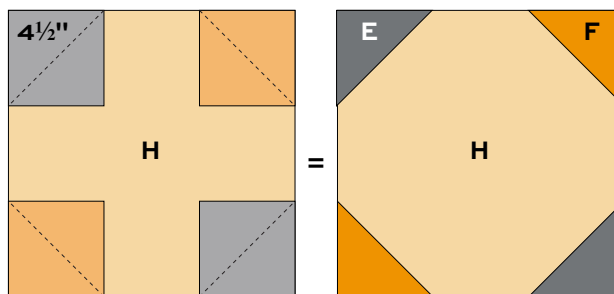


Diagram 1

Repeat stitching on the remaining corners (Diagram 1). You can appliqué the pumpkin and leaves in place on the center square now (go to Step 4), or add the HST borders first.

- The quilt uses half-square triangles (HST) that finish 4" square. Use your favorite method to make HST, or follow these directions. Cut squares 5" for HST that will be trimmed after stitching. If you prefer not to trim, cut squares 47/8". Draw a diagonal line on the wrong side of each Fabric E 5" (47/8") square (Diagram 2). Place a marked square on a Fabric B square, right sides together. Sew ¼" seam on each side of the marked line; cut apart on the marked line. Press open to make pieced HST. Trim the HST to 4½" square as needed. Make 14 HST like this. Repeat these steps to make 14 HST with Fabric F and B squares.

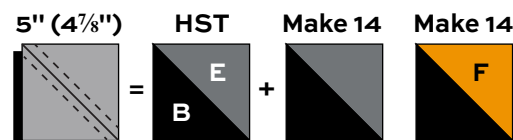


Diagram 2

- Referring to the Quilt Diagram, arrange the HST around the quilt as shown, paying careful attention to the orientation of the seams and fabrics. Looking through a camera or the wrong end of binoculars may help you find mistakes. Once you are satisfied with the arrangement, join 6 HST to make each border. Sew borders to opposite sides. Sew the appropriate HST to the top and bottom borders, and sew to the quilt.



Appliqué placement

- These directions are for fusible appliqué, so motifs are shown in reverse on the pattern sheets. Trace the motifs onto the paper side of paper-backed fusible web. Note that the pumpkin motif must be placed on a fold of the web to draw the complete pumpkin.
- Following manufacturer's instructions, fuse traced patterns to the wrong side of the appropriate fabrics. Cut out parts on the drawn lines. Position the patches in the center of the background square, referring to the appliqué placement diagram. Position the Fabric G pumpkin beneath the Fabric I pumpkin. The underneath pumpkin should be visible on the left and bottom as shown. Fuse the patches in numerical order. Add the face to the pumpkin. Finish the edges with a decorative machine stitch using contrasting thread, or use an invisible thread with a blind appliqué machine stitch.

- Sew a Fabric A border to a Fabric I short sash. Sew to the top of the quilt. Repeat for the bottom.

- The outer pieced border units are made with a stitch-and-flip technique. Draw a diagonal line on the wrong side of each Fabric G square. Referring to Diagram 3, place a marked square on a Fabric C rectangle, right sides together, aligning raw edges at the corner. Stitch on the drawn line; trim away and discard excess fabric. Press open. Repeat on the remaining corners. Make 12 border units. Join the units in 2 rows of 6 to make the outer side borders.

Border Unit – Make 12



Diagram 3

Magic Pumpkin Quilt, Pillow & Flag Bunting



8. Sew a pieced border between 2 Fabric I 48½" sashes. Sew to the side of the quilt. Repeat for the other side.
9. Finally, sew the remaining Fabric I sashes to the top and bottom.

Finishing the Quilt

10. Layer the quilt with batting and backing and baste. Quilt in the ditch around borders and block patches. Quilt around the appliqué motifs in the center. Bind to finish the quilt.



Quilt Diagram

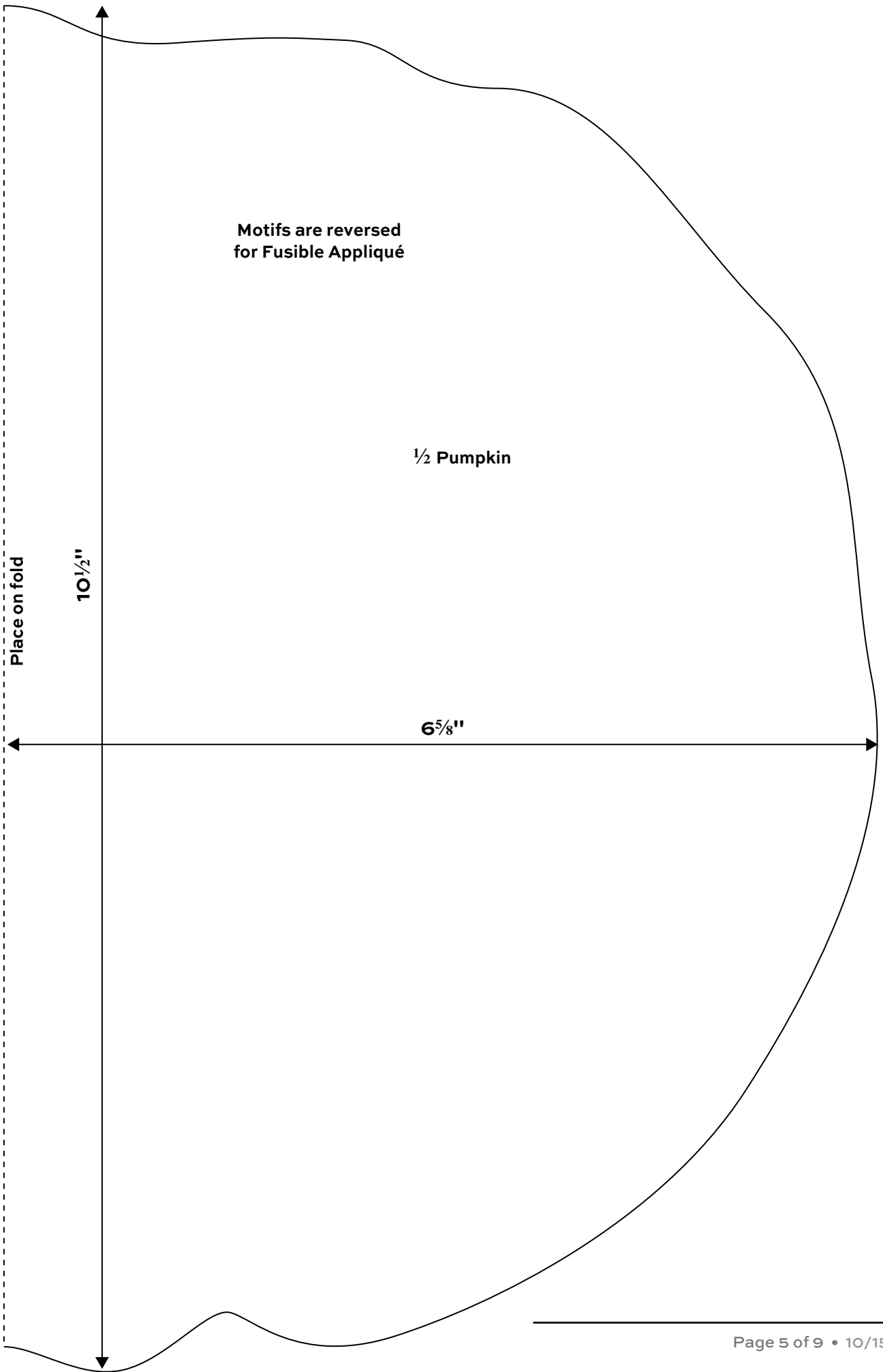
Making the Pillow

Follow Steps 1 and 4 above to add corners to the center square and to appliqué the pumpkin and leaves. Position the pillow front on top of the backing, right sides together. Pin all around. Stitch in a ¼" seam, leaving a generous opening along one side, not at the corner. Backstitch at the opening to secure. Trim the corners. Turn right side out and use a knitting needle or chopstick from the inside to push the seam so there are no puckers. Press the edge. Lightly stuff with polyfil or a 24" pillow form. Stitch the opening closed.

Making the Flag Bunting

From leftover fabrics, cut 2 templates for each flag. With right sides together, stitch along the long edges, leaving the short top open. Trim the point. Turn right side out and use a knitting needle from the inside to push the seam so there are no puckers. Press. Make 10 flags.

Using ½"-wide black bias tape, arrange the flags side by side along the tape, catching the raw top edges of the flags in the fold. Pin carefully. Hint: You may have better luck if you pin and stitch one flag at a time. Topstitch close to the edge of the fold of the bias tape, catching each flag in the stitching. Turn the ends of the bias tape to the inside to finish.



Motifs are reversed
for Fusible Appliqué

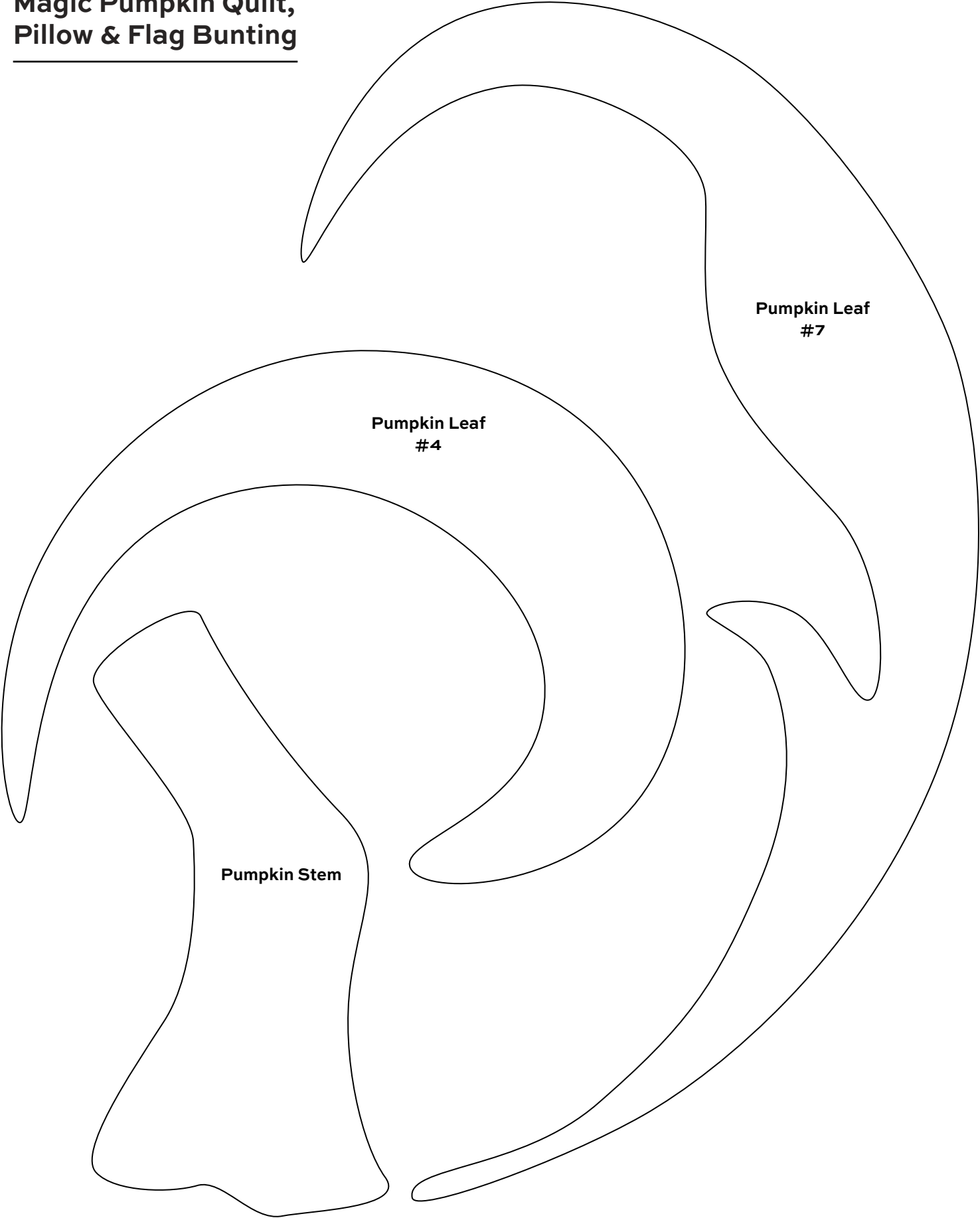
1/2 Pumpkin

Place on fold

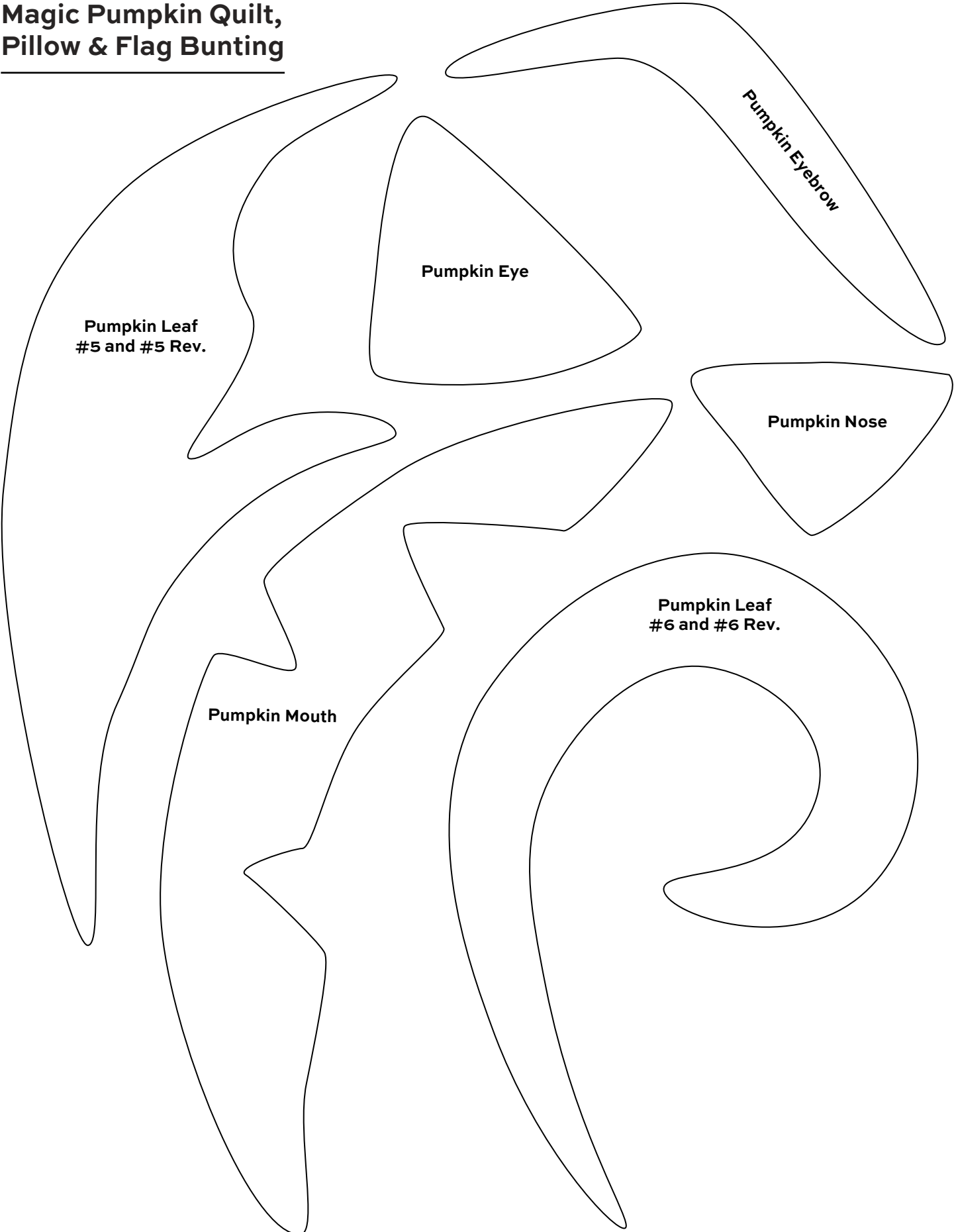
10 1/2"

6 5/8"

**Magic Pumpkin Quilt,
Pillow & Flag Bunting**



**Magic Pumpkin Quilt,
Pillow & Flag Bunting**



**Pumpkin Leaf
#5 and #5 Rev.**

Pumpkin Eye

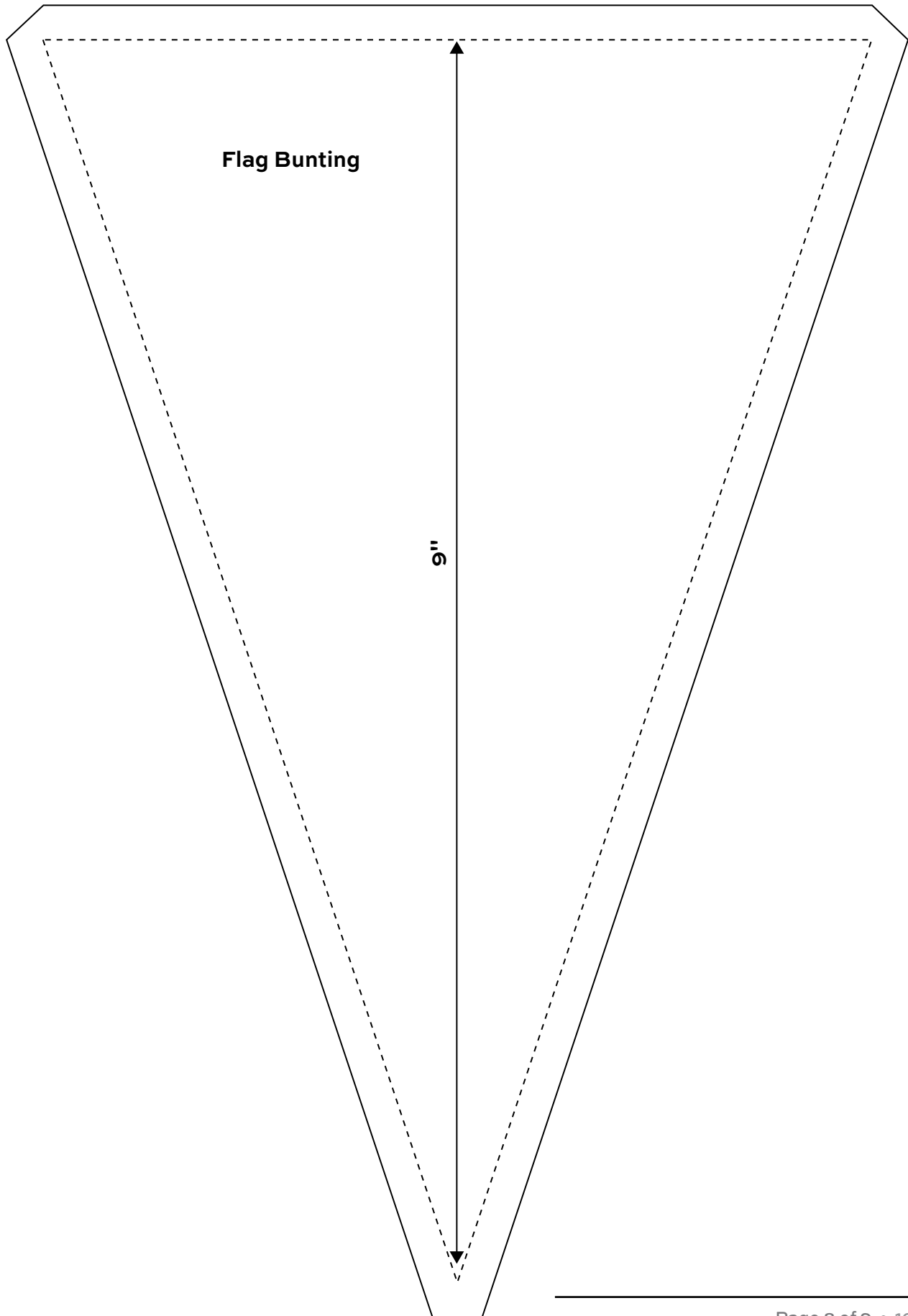
Pumpkin Eyebrow

Pumpkin Nose

**Pumpkin Leaf
#6 and #6 Rev.**

Pumpkin Mouth

Magic Pumpkin Quilt, Pillow & Flag Bunting



Midnight Haunt

ANDOVER FABRICS



100
years



9780 C



9780 K



9780 L



9781 K



9781 KL



9781 O



9782 K



9782 L



9782 O



9783 K



9783 L



9783 O



9784 C



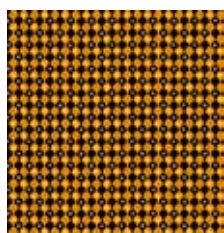
9784 K



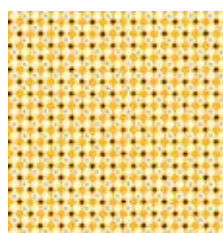
9784 O



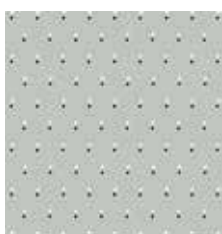
9785 C



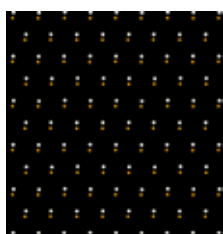
9785 KO



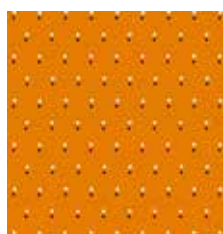
9785 OL



9786 C



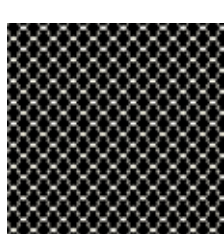
9786 K



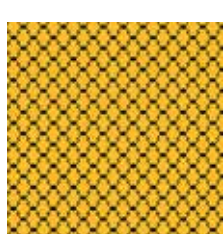
9786 O



9787 C



9787 KL



9787 O

Fabrics used in quilt patterns are shown in black. Fabrics shown are 25% of actual size.

andover : makower uk

Free Pattern Download Available

1384 Broadway New York, NY 10018
Tel. (800) 223-5678 • andoverfabrics.com